

2023 VOYAGES

Small islands of
JAPAN
& THE PHILIPPINES



- > Journey to Japan - 14 Nights - Guam to Tokyo
- > Through the Heart of Japan - 14 Nights - Tokyo to Fukuoka
- > Through Japan's Ryukyu Islands - 16 Nights - Fukuoka to Keelung
- > Island Trails of the Philippines - 16 Nights - Keelung to Manila
- > Plus adjoining voyages



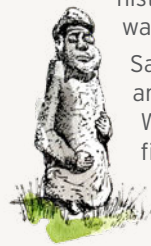
coralexpeditions
AUSTRALIA'S PIONEERING CRUISE LINE

JAPAN

= AND THE =

PHILIPPINES

Join us on our inaugural expeditions to the small islands of Japan and the Philippines. Cast off from Guam and trace history as we explore sites that lie in the wake of war, from Tinian and Torishima to Iwo Shima.



Sail to the small islands of the Japanese Ryukyu, Ogasawara and Izu archipelagos, most of which remain untouched by Western travellers. Discover remote island life at traditional fishing villages and experience authentic encounters with local people, culture and nature. This is the Japan that most visitors have not seen.

With an expert expedition team and warm Australian hospitality, there is no better way to experience these remote places than by small ship.

Voyage Series

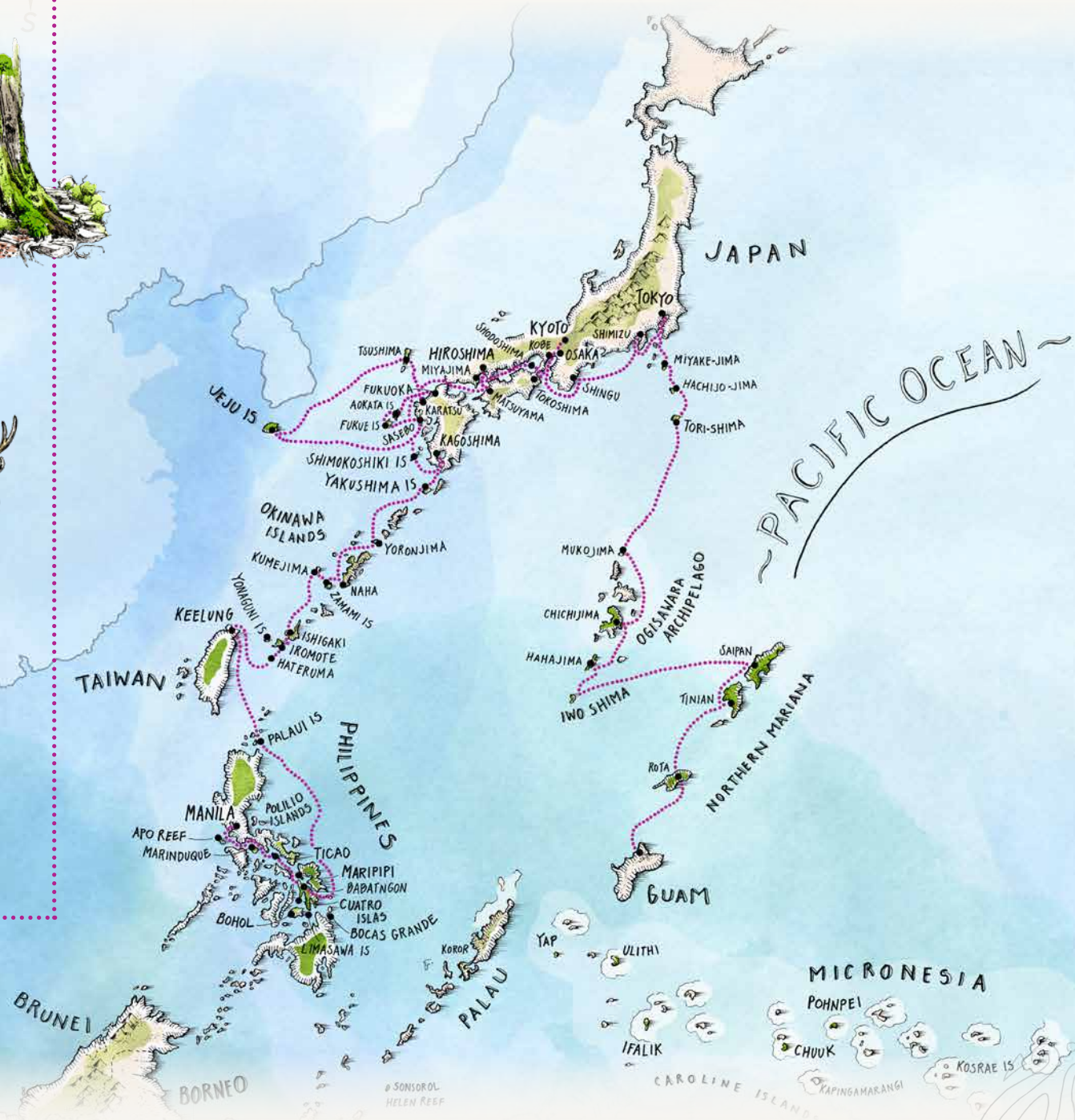
- > **Journey to Japan**
Guam to Tokyo | 14 Nights | 8 Sept 2023
- > **Through the Heart of Japan**
Tokyo to Fukuoka | 14 Nights | 23 Sept 2023
- > **Through Japan's Ryukyu Islands**
Fukuoka to Keelung | 16 Nights | 7 Oct 2023
- > **Island Trails of the Philippines**
Keelung to Manila | 16 Nights | 24 Oct 2023

ADJOINING ITINERARIES

- > **West Papua, Raja Ampat & Micronesia**
Darwin to Guam | 16 Nights | 22 Aug 2023
- > **Through the Islands & Atolls of Micronesia**
Manila to Kavieng | 25 Nights | 9 Nov 2023

ADJOINING VOYAGE SAVINGS

Join us on multiple voyages in the series and you will enjoy the benefits our Xplorers Club along with a further 10% adjoining cruise saving.



JOURNEY TO JAPAN

GUAM > TOKYO

14 NIGHTS | 8 SEPTEMBER 2023

①

Expedition Highlights

- > Enjoy time exploring the rich biodiversity of the Northern Mariana Islands of Rota, Pagan and Maug by swimming, snorkelling and diving in its aquamarine waters
- > Visit three of the UNESCO World Heritage Site listed Ogasawara Islands: Hahajima, Chichijima and Mukojima
- > Learn of WWII history at Tinian, where the Enola Gay was loaded with the atomic bomb that was dropped on Hiroshima and see the famous location of the 'Raising the Flag' at Iwo Jima
- > Visit the Hattori residence to experience the kashitate dance and hear the traditional hachijo taiko drum performance
- > On the volcanic ash slopes of Torijima, view the largest known population short-tailed albatrosses that are known to breed on only four islands in the North Pacific
- > Enjoy bird watching opportunities with possible sightings of rare endemic species including the Izu Island thrush of Mikurajima
- > Visit Shimizu, one of Japan's most scenic ports with unparalleled views of Mt. Fuji and explore the rich tea plantations located on the Nihondaira Plateau
- > Learn about unique geology, botany and wildlife including encounters with whales, dolphins, schools of tuna and green sea turtles as we visit remote Japanese islands



Fares

	Bridge Deck Balcony Suite	Bridge Deck Stateroom	Explorer Deck	Promenade Deck	Coral Deck
Twin Share	26,750	20,900	19,050	14,250	11,900
Sole Use	n/a	n/a	28,575	21,375	17,850

[VIEW AVAILABILITY & BOOK ONLINE >](#)

Prices are per person and listed in Australian Dollars (AUD). Refer to website pricing at time of booking as pricing may be subject to change. *Limited sole use occupancy available.

ITINERARY: 14 NIGHTS > GUAM TO TOKYO

DAY 1: DEPART GUAM

Board *Coral Adventurer* at Guam at 4:00pm for a 7:00pm departure. Settle into your cabin and relax as we set sail across the Pacific Ocean. This evening, join the Captain's welcome drinks and meet your crew and fellow guests as the sun sets.

DAYS 2-14:

These are expedition itineraries covering remote regions. Your Captain and Expedition Team may make changes to the daily schedule when necessary to maximise guest experience. Below are the highlight destinations of your voyage.

ROTA

As the southernmost island of the United States Commonwealth of the Northern Mariana Islands (CNMI) with picture-perfect palm-fringed beaches and aquamarine waters that invite snorkelling and kayaking, Rota is known as 'friendly island' with its relaxed ambience. The island is home to diverse flora and fauna including the endemic and endangered rota white-eye bird, Mariana fruit bat and Mariana cow.

Learn about WWII history at the Old Japanese Cannon which overlooks Mount Tapingot, known as 'wedding cake mountain' for its multi-layered topography. Snorkel or scuba to the undersea walls, shipwrecks and vivid coral reefs that surround the islands

TINIAN

See the megalithic House of Taga stone pillars on Tinian Island. Visit the historic WWII site where the Boeing B-29 Superfortress bomber Enola Gay was loaded with the atomic bomb bound for Hiroshima. Stroll along the harbour at San Jose, the island's largest village and swim in the clear waters of Taga Beach.

PAGAN ISLAND

Pagan Island is an active volcanic island located some 320km north of Saipan. Here we will step ashore to visit the small local community and explore the island's lava areas. We will learn of the island's World War II history and visit the Japanese Zero wreck and other artifacts.

MAUG ISLAND

Maug Island is a remote volcanic caldera and is flagged as an Important Bird Area for its populations of Micronesian megapodes, red-tailed tropicbirds, brown noddies, Micronesian myzomelas and Micronesian starlings. Enjoy excellent birding opportunities and snorkel or dive to explore the island's pristine coral reef ecosystem.

IWO SHIMA

The volcanic island of Iwo Shima where the WWII Battle of Iwo Shima took place along with the site of Associated Press photographer Joe Rosenthal's famous photo Raising the Flag which was photographed on Mt. Suribachi. The famous photograph won the 1945 Pulitzer Prize - the only time an image has won the prize the year it was captured.

CHICHIJIMA

The largest of the Ogasawara Islands, mountainous Chichijima with its subtropical forests is rimmed by steep rocky cliffs that bound pristine white-sand beaches. Populations of humpback and sperm whales frequent the ocean during annual migrations, along with year-round pods of bottlenose and spinner dolphins.

Swimmers, snorkelers and kayakers may have the opportunity to see these graceful creatures up close. Nesting turtles and large populations of sea birds may be seen at Minamijima Island, a small uninhabited island with an eroded tunnel carved into a cliff connecting a scenic bay to the ocean beyond the island.

HAHAJIMA

Hahajima is one of only two inhabited islands (Chichijima being the other) in the Ogasawara Island Group. Like Chichijima, Hahajima is home to unique flora and fauna. Walking trails crisscross the long, narrow island offer the opportunity to potentially see bird species such as the protected bonin honeyeater and boobies along with endemic plants such as sekimon trees. Limestone karsts and caves with exposed tree roots overhead can be walked through, while Ross Museum and the history Okimura Cemetery offer insight into the lives of islanders who once lived here.

MUKOJIMA AND TORIJIMA

The uninhabited outcrop of Mukojima and nearby Torijima is home to an important nesting site for a colony of black-footed albatrosses and Laysan albatrosses. Cruise past the active volcano of Torijima Island which houses a weather station, volcanic research station and is also a bird sanctuary. Albatrosses, Tristrams storm petrels, common kestrels and blue rock thrush may be sighted, along with whales and dolphins.

HACHIJOJIMA

On Hachijojima see the landscape changed by volcanic eruptions and enjoy hot springs and waterfalls within moss-draped forests with blooming hydrangeas, aloe and freesia. Hikes with unbeatable views are on offer here where you can observe the unique nature and grazing cows. At the Hattori Residence be immersed in local culture with a Kashitate dance and Hachijo Taiko drum performance, learn about kimono traditions and wander the ancient stone-walled laneways of this historical site.

MIKURAJIMA

The coast of Miyakejima is largely formed by lava cooling which has created interesting geo-spots over time. Megane Rock (spectacle rock) is one such result, formed by two enormous arches lined together which have eroded over time to create a formation resembling a pair of spectacles. This unique volcanic landscape is home to flora and fauna that thrive in this challenging terrain. The island is famous for its bird watching opportunities with sightings of the Izu Island thrush - a designated natural treasure. Walk along the volcanic trails and explore the landscape while encountering wildlife at this extraordinary destination.

SHIMIZU

Shimizu, translating to 'pure water' in Japanese is one of Japan's most scenic ports with unparalleled views of Mt. Fuji. With a mild climate, the area is home to rich tea plantations located on the Nihondaira Plateau. Visit the famous tea plantations, explore the historic township with a bustling seafood market and museum, discover the photogenic miho-no-matsubara pine grove and take to a hiking trail to enjoy rustic ropeways.

DAY 15: ARRIVE TOKYO

Our voyage ends in the Japanese capital of Tokyo. Disembark *Coral Adventurer* at 8:30 am and bid farewell to new-found friends, the Master and crew.



THROUGH THE HEART OF JAPAN

TOKYO > FUKUOKA

14 NIGHTS | 23 SEPTEMBER 2023

①

Expedition Highlights

- > Try your hand at making traditional fine porcelain Arita-yaki pottery at Atelier Yume
- > Experience Awa - 'fool's dance' which is a well-known traditional dance with origins dating back some 400 years at Tokujima
- > View the iconic red torii gate of the Itsukujima shinto shrine 'floating' in the Seto Inland Sea and visit neighbouring cultural sites to witness centuries-old customs
- > Uncover World War II histories including on a visit Hiroshima's Peace Memorial Park
- > Visit Osaka, the food capital of Japan, or the historic city of Kyoto where traditional and modern architecture collide
- > Explore UNESCO-listed Global Geopark Manjanggul, a 7.4km long Lava Tube and Cave of South Korea's Jeju Island
- > Discover the natural beauty of Tsushima's untouched forests home to abundant birdlife and the endangered Tsushima Leopard Cat
- > Visit Matsuyama Castle that sits atop Mount Katsuyama, one of Japan's twelve original castles constructed in the early 1600s

Fares

	Bridge Deck Balcony Suite	Bridge Deck Stateroom	Explorer Deck	Promenade Deck	Coral Deck
Twin Share	26,750	20,900	20,990	16,990	13,290
Sole Use	n/a	n/a	31,485	25,485	19,935

[VIEW AVAILABILITY & BOOK ONLINE >](#)



Prices are per person and listed in Australian Dollars (AUD). Refer to website pricing at time of booking as pricing may be subject to change. *Limited sole use occupancy available.

ITINERARY: 14 NIGHTS > TOKYO TO FUKUOKA

DAY 1: DEPART TOKYO

Board *Coral Adventurer* from Tokyo Bay at 4:00pm for a 7:00pm departure. Settle into your cabin and relax as we set sail.

DAY 2- 14:

These are expedition itineraries covering remote regions. Your Captain and Expedition Team may make changes to the daily schedule when necessary to maximise guest experience. Below are the highlight destinations of your voyage.

SHIMIZU

Shimizu is one of Japan's most scenic ports with unparalleled views of Mt. Fuji. Visit the famous tea plantations, explore the historic township with a bustling seafood market and museum, discover the photogenic miho-no-matsubara pine grove and take to a hiking trail to enjoy rustic ropeways.

SHINGU

Shingu is home to the sacred kamikura shrine. The area also hosts a stunning part of the Kumano River, Dorokyo Gorge, and pilgrimage routes to the UNESCO World Heritage Site of Kii Mountain Range. Climb the 538 steps to the shine to see gotobiki iwa (the holy rock) and picturesque scenery from this elevated viewpoint. Explore the city to connect with the food, culture and history of the area and set off on the daimonzaka trail - a cobblestone staircase from the valley up to the temples.

OSAKA / KYOTO

Today, you may choose to explore Osaka or Kyoto for the day. At bustling Osaka visit Osaka Castle, join a guided tour of famous Dotonburi Street, stroll through Kuromon Market and take it all in from the observation deck in Umeda Sky Building. At Kyoto city, once the capital of Japan, learn of the rich history of this area as we visit these places as well as local Nishiki Market, well-known for its fantastic takeaway food. Time permitting, we may travel by bullet train.

TOKUJIMA

The Iya Valley is a remote, mountainous valley with dramatic steep-sided mountain slopes strung with suspension bridges constructed from mountain vines. We will take a sightseeing boat cruise through the Oboke Gorge, admire artworks and artefacts at the Otsuka Museum of Art, visit a Buddhist temple and experience an Awa Dance performance, which is celebrated annually at a festival dedicated to this dance style.

SHODOJIMA

One of the first islands born to the Gods in the creation myth of Japan, Shodojima literally means 'small bean island', a fitting name for an island where traditionally soybean crops were processed into soy sauce. Learn about this time-honoured condiment with a 400-year-old history at the Marukin Soy Sauce Historical Museum. Experience the making of the Japanese famous Somen noodle and try your hand at dividing the noodles with long chopsticks. Visit Misaki no Bunyojo, the elementary school featured in the famous film *Twenty Four Eyes*.

MIYAJIMA

The famed Itsukujima shrine is one of Japan's most recognisable symbols - a UNESCO World Heritage Site and National Treasure. Other important sites are Daisho-in, a temple of Shingon Buddhism and Reikado Hall, located on Mt Misen, the highest peak on Miyajima. Walking paths link cultural sites and Maple Valley, providing the ideal pace with which to absorb centuries-old customs. Stroll amongst the deer that wander the same sites.

HIROSHIMA

Forever linked to the WWII tragedy, Hiroshima has since been rebuilt while retaining historical heritage, with Peace Memorial Park the prominent feature. Shukkeien Garden's valleys, mountains and forests are represented in miniature with tea houses amongst the gardens an ideal spot to enjoy the surrounds.

MATSUYAMA

High on Mount Katsuyama, Matsuyama Castle is one of Japan's twelve original castles and stands at the heart of the city of Matsuyama. Pilgrims dressed all in white are a frequent site at Ishitji Temple, where an inner temple connects to the main temple grounds via a dimly cave and 200m long tunnel that houses Buddhist statues, carvings and drawings.

KARATSU

This trading hub is known for its safe harbour and close proximity to other foreign trading ports. Here we will explore the island's many idyllic surrounds including the Nanatsugama limestone caves, the bustling city area and markets, climbing to historic Karatsu Castle and one of Japan's top waterfalls, Mikaeri Falls.

TSUSHIMA

Tsushima was once a single island before a canal divided the island in two in the 1600's, then into three islands in the 1900's. Though in reality there are approx. 100 islands that collectively make up Tsushima with its abundance of natural beauty and untouched forests. Birdwatching is a popular pastime, particularly within the Tsushima Wildlife Conservation Centre, home to the Tsushima Leopard Cat, an endangered species.

JEJU (SOUTH KOREA)

Jeju Island's Manjanggal lava tubes are regarded as the finest lava tube system of caves anywhere in the world and are recognised by UNESCO as a Global Geopark site. The Jeonbang Falls is Korea's only waterfall that tumbles directly into the sea, while Seongsan Ilchulbong Peak is a flat-topped crater that rose from the sea many years ago.

SASEBO

The Maritime Self-Defence Force Sasebo Museum displays historical naval vessels alongside the Former Sasebo Navy Club which dates back to the late 1800's. The historical pottery town of Arita is where Japan's fine porcelain was first produced around 400 years ago. Arita-yaki pottery is now the most highly regarded pottery across all Japan with its 'secret ingredient'. We try our hand at pottery making with an opportunity to make our very own Arita ceramics.

AOKATA AND NAKADORI ISLANDS, GOTO ISLANDS

The Goto Islands are best known for Christianity, while religion was banned, the 'hidden Christians' settled here and continued practicing their faith in secret until the ban was lifted in the 1870s. With around 50 churches dotted across the prefecture, such as the UNESCO World Heritage-listed Kashiragajima Church with its stone construction, other interesting sites we will visit include the Whale Museum and the Stone Monuments of Wakamatsu Island.

FUKUE ISLAND

Also a member of the Goto Islands, Fukue Island is the largest of the group with hilly terrain, temples and churches. Be welcomed into port with wind instruments and a traditional drum performance. Hike Mt. Onidake, the dormant volcano, learn of the area's history on a visit to the city museum, cruise Abunze coast to view the lava rock formations and soak in the natural beauty of the island with its beaches, mountains and craggy coastline.

DAY 15: ARRIVE FUKUOKA

Our voyage ends in the Japanese port of Fukuoka. Disembark *Coral Adventurer* at 8:30 am and bid farewell to new-found friends, the Master and crew.

THROUGH JAPAN'S RYUKYU ISLANDS

FUKUOKA > KEELUNG

16 NIGHTS | 7 OCTOBER 2023

①

Expedition Highlights

- > Be among the few overseas tourists to set foot on the remote Ryukyu Islands and learn about the culture and tradition of these coastal communities
- > Walk through UNESCO listed thousand-year-old cedar forests and view a 25m tall giant cedar tree estimated to be up to 7,200 years old
- > At Naha Island, Okinawa, try your hand at glassmaking in the traditional Ryukyu style and witness the 600-year-old practice of Hanhau textile weaving
- > Swim, snorkel, kayak and dive to explore Japan's diverse underwater ecosystems including at the pristine Kerama Island Group
- > Venture into Okinoerabujima's limestone caves to be surrounded by twinkling stalactites and stalagmites
- > Encounter rare endemic wildlife including the Ludith's Jay and Amami black rabbit at Amami Oshima
- > Learn of Ryukyu culture and history and hear songs played on the traditional Sanshin instrument
- > Enjoy an after dark stargaze from the Astronomical observation tower on Hateruma Island

Fares

	Bridge Deck Balcony Suite	Bridge Deck Stateroom	Explorer Deck	Promenade Deck	Coral Deck
Twin Share	30,600	23,800	21,750	16,300	13,600
Sole Use	n/a	n/a	32,625	24,450	20,400

[VIEW AVAILABILITY & BOOK ONLINE >](#)

Prices are per person and listed in Australian Dollars (AUD). Refer to website pricing at time of booking as pricing may be subject to change. *Limited sole use occupancy available.



②



③



④



ITINERARY: 16 NIGHTS > FUKUOKA TO KEELUNG

DAY 1: DEPART FUKUOKA

Board at the harbour city of Fukuoka at 4:00pm. Settle into your cabin before Captain's welcome drinks as the sun sets.

DAY 2 - 14:

These are expedition itineraries covering remote regions. Your Captain and Expedition Team may make changes to the daily schedule when necessary to maximise guest experience. Below are the highlight destinations of your voyage.

NAGASAKI

Once home to a major imperial Japanese base during the first Sino-Japanese War and Russo-Japanese War as well as being the second city to be hit by an atomic bomb, Nagasaki has a colourful history. Visit the peace memorial and the many shrines and temples throughout. Take note of the mix of old and new architecture with influences from the US, Dutch to Chinese.

SHIMOKOSHIKIJIMA

Shimokoshikijima is a top geological site with large scenic cliffs along with dinosaur fossils at sites located across the island. Here we have the opportunity to explore the Napoleon Rock that stands an impressive 127m tall. Spend time at the Satsumasendai Fossil Exhibition, see the famous three-tiered waterfall, explore dinosaur fossil sites and hear songs played on the traditional instrument called a Gotta.

KAGOJIMA

Kagojima is the easternmost and second largest of the Sumi Islands belonging to Kagojima Prefecture. Flagged as an Important Bird Area, the island is home to Japanese wood pigeons and Ryukyu robins. Beach hop on the west coast to find pristine white sands and sea turtles, with the opportunity to swim in the clear waters. Explore the network of wide caves at low tide and the fascinating daily operations of the space centre.

YAKUJIMA

Walk through UNESCO-listed thousand-year-old cedar forests and view a 25-metre-tall giant cedar tree estimated to be up to 7,200 years old at Yakusugi Land. With a number of walking trails on the island, we may also visit some of the many waterfalls. The Yakusugi Museum displays the ecology, history and industry of the forests on the island. Learn about the Yakujima cedar trees, the products that come from them and how they were harvested.

SUWANOSEJIMA

Suwanosejima is one of the Tokara Islands and is home to a population of less than 100 people who make their living from agriculture, fishing and seasonal tourism. The volcano on this island is one of the most active in the world, in a state of near-continuous strombolian-style eruption since 1949. Cruise around the island to view this unique, remote destination.

AMAMI OSHIMA

Amami Oshima is home to rare endemic wildlife including the prefectural Lidth's Jay bird recognisable by its blue and red plumage and the Amami black rabbit - one of the most primitive species of rabbit alive. Enjoy time on the picturesque tropical beaches by swimming, kayaking and diving. Explore Kuroshio Forest by kayak and learn of the island's history at Amani Park.

OKINOERABUJIMA

The 'island of flowers and limestone caves' is a beautiful and peaceful island. Over 300 limestone caves can be found here, where you can discover the natural beauty and mysteries which have spawned many of the legends surrounding these natural treasures. Venture into Shoryudo Cave and be surrounded by twinkling stalactites and stalagmites. Spot abundant marine life alongside numerous species of coral while swimming, snorkelling and diving in the island's pristine waters.

YORONJIMA

Yoronjima is the northernmost island in Japan where the Southern Cross constellation can be seen. Part of the Amami Gunto National Park, Yoronjima is famed for its pellucid waters for diving, swimming, snorkelling and kayaking.

NAHA, OKINAWA

Naha is one of the 160 islands comprising the Okinawa group. Encounter Okinawa's culture that sets it apart from the other Japanese prefectures, including the local sake: Awamori. Try your hand at a traditional Ryukyu Glass workshop, experiencing the 600-year-old practice of Hanhau textile weaving and visiting one of the oldest distilleries in Okinawa.

ZAMAMI ISLAND, KERAMA ISLAND GROUP

Zamami is home to the nationally protected species of Kerama deer, recognisable by their large eyes and white heart-shaped pattern below their tail. The water clarity here is world-class and the colour of the ocean even has its own namesake: 'Kerama blue'. The underwater scenery lures scuba divers and snorkellers from around the world. Visit the observatories on Zamami Island and enjoy magnificent views. Swim, snorkel, scuba dive and kayak from the pristine beaches that receive few visitors.

KUMEJIMA

Part of the Okinawa Shoto Island group, Kumejima is known for its numerous unique rock formations and quiet unspoilt natural coastline. The island was once used to produce large amounts of rice due to its abundance of freshwater. Here, we will enjoy water activities in the warm waters and cruise the rocky coastline.

MIYAKOJIMA

Composed of limestone, this triangular island is one of three islands connected by bridges. Known to be home to some of Japan's best beaches, it is a great spot for water activities with its unique limestone caves, canyons and rock formations. It is possible to swim through tunnels, short passageways and even into a pitch-black dome. Observe the 1600 species of flora on the island on a stroll through the Botanical Garden and walking trails.

ISHIGAKI

Ishigaki, known as 'the country of poets, the island of songs and the land of dance,' an entertainment culture unique to Okinawa. View majestic manta rays, as Ishigaki is also home to the highest encounters of these ocean giants. Ranked the number one diving destination in Japan for 16 years with high visibility and vibrant coral and marine life, enjoy diving and snorkelling here.

IRIOMOTE AND HATERUMA

On Iriomote Island, the second largest island in Okinawa, kayak through the mangroves and soak in views of the largely undeveloped island covered in dense jungle. Later, admire the star-filled night sky with the benefit of little light pollution from the Astronomical observation tower on Hateruma Island - the southernmost inhabited island of Japan.

YONAGUNI ISLAND

Discover the submerged stone structures of what's thought to be an ancient underwater city sunk by an earthquake approximately 2,000 years ago. Whale and hammerhead sharks are commonly spotted here. Cruise the coastline to view unique rock formations and learn of the island's history, culture and language. Climb to the Tindabana outlook where you can gaze at panoramic views of Sonai Village or walk to the monument that marks the westernmost point of Japan.

DAY 17: ARRIVE KEELUNG

Disembark Coral Adventurer at 9:30 am and bid farewell to new-found friends, the Master and crew.

ISLAND TRAILS OF THE PHILIPPINES

KEELUNG > MANILA

16 NIGHTS | 24 OCTOBER 2023

①

Expedition Highlights

- > Explore the myriad of walking trails and suspension bridges that wind through towering marble valleys and past thundering waterfalls of Taroko Gorge National Park
- > Dive, snorkel and swim in pristine marine environments such as Cuatro Islas
- > Visit the township of Maripipi to taste local delicacies, watch wild vine weaving and experience traditional pottery making
- > Experience the natural beauty of Palau Island National Park where wildlife encounters, both on land and in the sea are its main attractions along with historic Cabo Engano lighthouse
- > Cruise the Loboc River on a leisurely river cruise with traditional song and dance entertainment
- > Visit UNESCO-listed Catanduanes Island to experience pristine beaches, explore caves and taste freshly caught seafood
- > Enjoy the opportunity to swim with manta rays at the ecological frontier of Ticao
- > Be immersed in island village life on strolls through traditional markets, tasting local delicacies and witnessing cultural practices



②



③

Fares

	Bridge Deck Balcony Suite	Bridge Deck Stateroom	Explorer Deck	Promenade Deck	Coral Deck
Twin Share	30,600	23,800	21,750	16,300	13,600
Sole Use	n/a	n/a	32,625	24,450	20,400



[VIEW AVAILABILITY & BOOK ONLINE >](#)

Prices are per person and listed in Australian Dollars (AUD). Refer to website pricing at time of booking as pricing may be subject to change. *Limited sole use occupancy available.

ITINERARY: 16 NIGHTS > KEELUNG TO MANILA

DAY 1: KEELUNG

Board *Coral Adventurer* at 4:00 pm at Keelung, Taiwan. Settle into your stateroom and relax as we set sail across the Pacific Ocean. Join the Captain's welcome drinks and meet your crew and fellow guests as the sun sets.

DAY 2 - 16:

These are expedition itineraries covering remote regions. Your Captain and Expedition Team may make changes to the daily schedule when necessary to maximise guest experience. Below are the highlight destinations of your voyage.

HUALIEN, TAIWAN

The central Pine Garden is a cultural centre set inside a former Japanese military office. The Hualien County Stone Sculpture Museum displays contemporary and traditional stone carvings. Tzu Chi Cultural Park is a tranquil green space, with statues and a meditation hall. On the Pacific Ocean coast, sprawling Nanbin Park features a popular night market. Explore the myriad of walking trails and suspension bridges that wind through towering marble valleys and thundering waterfalls of Taroko Gorge National Park.

CLAVERIA, LUZON

Claveria is known as 'Paradise of the North'. On our visit here, cross the hanging bridge at Barangay Nagsabaran and taste local food. Explore the rich biodiversity of the land, experience local catch fishing and learn about how difference species of fish are hatched at the Bureau of Fishery and Aquatic Resources. See one of the heritage houses, the grotto of the Lady of Lourdes and a 948 church bell at the Sta Maria Eco Park.

CALAYAN ISLAND

Belonging to the Babuyan Group along the Luzon Strait, Calayan Island boasts pristine white sand beaches and great hiking terrains. Beach comb at Sibang Cove and hike to Nagudungan Hills for an spectacular view of the town, hills and cliffs.

PALAU ISLAND

Experience the natural beauty of Palau Island National Park where wildlife encounters, both on land and in the sea are main attractions along with historic Cabo Engano lighthouse. Explore the Punta Verde falls and trek to faro de Cabo Engano at Cape Engano to be rewarded with a breathtaking view.

POLILLO ISLAND

A relaxed tropical island with white sand beaches and clear waters. We will spend time snorkelling, swimming and kayaking around the small islets. Beachcomb and admire the rock formation resembling two chickens. Bird watching is available at close by Minasawa Island and Putting Bato has hidden caves to discover.

CATANDUANES ISLANDS

Enjoy water activities and leisurely beach walks at some of the Philippines famously scenic beaches with palm-fringed white sand, aquamarine sea and coral reefs populated by vibrant coral and tropical fish. At the UNESCO Geopark Reserve of Catanduanes Island explore its unique landscape with lagoons, caves and waterfalls and learn about the melding of Philippines and Spanish culture and history at the Museo de Cataduanes.

BIRI & CAPUL ISLANDS

Biri Island, a marine protected reserve with opportunities to explore the underwater wonderland, we also learn about Biri Island's place in WWII history. Visit the Magasang Rock formations and take a dip in the water in the middle of these rocks. Those who choose to dive have the opportunity to join the volunteer program to help remove sea pests feeding on coral. Capul Island's church, is a National Cultural Treasure as designated by the National Museum of the Philippines. Equally well known is the Capul Lighthouse. Visit these historic landmarks and take a walking tour to a natural spring once used by Spanish galleons to fetch water.

MARIPIPI

Known as the 'Isle of Gems' for its clear waters, friendly locals and dazzlingly bright white sand beach, Maripipi along with Sambawan and Carnaza Island offer opportunities for snorkelling, diving, kayaking as well as bird watching in the lush forests. Visit the township of Viga and experience cultural immersion such as tasting local delicacies, watching weaving of wild vines and participating in pottery making.

TACLOBAN, LEYTE

Learn more about Leyte's history at the MacArthur Landing Memorial National Park in Palo. The park honours General Douglas MacArthur and his return to the Philippines to help defeat the Japanese forces on the 20th of October 1944. On your visit here you will see the bronze statues of the heroic general and his comrades on a shallow pool. View artworks from around the world at Santo Nino Shrine & Heritage Museum, visit the Anibong shipwreck memorial and stroll through local markets.

CUATRO ISLAS

Meaning 'four islands' in Spanish, Cuatro Islas is a group of elusive islands, three of which being inhabited and rarely visited by locals and tourists alike. They are an idyllic location for a full day of relaxing and water activities including snorkelling, diving, kayaking and cruising around the tropical paradise by Xplorer.

BOHOL

Board a riverboat for a leisurely cruise along the Loboc River while enjoying a buffet-style lunch of local delicacies accompanied by local musicians. Enjoy passing by waterfront villages and watching children swinging from rope swings. Moor up against a floating platform where women and children dressed in traditional costumes perform a lively song and dance. Visit the Tarsiers Conservatory to see the world's smallest primate, and from the viewpoint lookout admire the cacao-coloured Chocolate Hills.

MACTAN

Learn of Mactan history and visit the Lapu Lapu Monument erected to honour the bravery of the Datu. The Magellan Monument, on the other hand, is a large obelisk dedicated to the Portuguese explorer who brought Christianity to the Philippines. Learn about the art of making guitars at Alegre Guitar Factory, known for ukuleles and the bandurria, a plucked chordophone similar to a mandolin and used in Spanish folk music. Enjoy an optional traditional Mactan meal for lunch at the Sut TuKil restaurant.

TICAO

Ticao Island is an ecological frontier for the conservation of Manta Rays and a rare subspecies of Visayan warty pig. Swim with Manta Rays and pass over wrecks of the world's biggest battleship. We may also stop in at Matangtibig Spring for a fresh-water dip. Admire old-style homes of San Jacinto and Monreal and enjoy watching the sunset onboard with a view of Guinlatayan Rock.

MARINDUQUE

Go on a cultural tour by visiting heritage houses, churches and shrines. Browse traditional handicrafts stores and souvenir shops to learn more about the island province's local industries. Visit the Century-old Boac Cathedral and the Biglang Awa Shrine as well as the Marl Insects and Butterfly Garden. The area is also home of the kalutang, a musical instrument made of two pieces of wood cited by the National Commission for Culture and the Arts as one of the intangible cultural heritages of the Philippines.

DAY 19: MANILA

Disembark *Coral Adventurer* at 9:00am and bid farewell to new-found friends, the Master and crew.

WEST PAPUA, RAJA AMPAT & MICRONESIA

DARWIN TO GUAM

16 NIGHTS | DEPARTS 22 AUGUST 2023



Expedition Highlights

- Enjoy the ancient warrior tradition welcome of the kora kora canoes in Banda Niera
- At Kitikiti Waterfalls, Mommon Peninsula, cruise the pristine landscape by Xplorer in search of hidden lagoons and exotic birds such as hornbills and birds of paradise
- Discover the limestone karst islands of Raja Ampat and hike to the summit of Pindito Peak
- Snorkel and dive the coral reefs, lava flows and WWII wrecks of the Coral Triangle including Ulithi Atoll, Sonsorol, Banda Neira and the marine playground of Raja Ampat
- Join in traditional dance and singing performance and experience ancient Austronesian and Micronesian traditions passed down through history
- Learn about Yap's time-honoured customs and culture and visit the isolated islet of Ulithi home to sea turtles, coconut crabs and sea birds
- Meet the people of Sonsorol Island who are linguistically and culturally different from their Caroline Islands neighbours
- Discover the breathtaking landscape of Palau and swim with harmless golden jellyfish in Jellyfish Lake

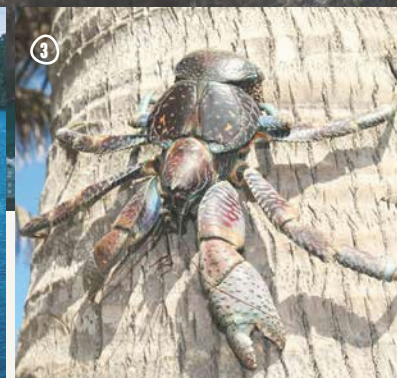
Fares

	Coral Adventurer	Bridge Deck Balcony Suite	Bridge Deck Stateroom	Explorer Deck	Promenade Deck	Coral Deck
Twin Share		30,600	23,800	21,750	16,300	13,600
Sole Use		n/a	n/a	32,625	24,450	20,400

[VIEW AVAILABILITY & BOOK ONLINE >](#)

Prices are per person and listed in Australian Dollars (AUD). Refer to website pricing at time of booking as pricing may be subject to change. *Limited sole use occupancy available.

Join us on multiple voyages in the series and you will enjoy the benefits our Xplorers Club along with a further 10% adjoining cruise saving.



ITINERARY: 16 NIGHTS > DARWIN TO GUAM

DAY 1: DEPART DARWIN

Board the Coral Adventurer at Darwin's Fort Hill Wharf at 8:00am. Settle into your cabin and relax as we set sail across the Arafura Sea. This evening, join the Captain's welcome drinks and meet your crew and fellow guests as the sun sets.

DAYS 2-16:

These are expedition itineraries covering remote regions. Your Captain and Expedition Team may make changes to the daily schedule when necessary to maximise guest experience. Below are the highlight destinations of your voyage.

BANDA NEIRA

In The Banda archipelago is the historic heart of the spice trade and was once the world's only source of nutmeg until the mid-19th century as Portuguese, Dutch and English fought for control over the spice trade.

As we approach and enter the Zonnegat channel, witness a thrilling spectacle as Moluccan rowers in traditional kora kora canoes greet the ship and escort you into the harbour. Go ashore to be welcomed by the nutmeg dance of the local school students, before touring the historic township. Spend time snorkelling and diving over the nearby lava flow reef system and trying local foods along on the waterfront. Explore Fort Belgica, built by the first Governor-General of the Dutch East Indies (now Indonesia) in 1611. Join the locals for a traditional dance and music performance before enjoying a glass of champagne as the sun sets over the fort.

KITIKITI WATERFALLS, MOMMON PENINSULA

This afternoon, visit the mesmerising Kitikiti Waterfall, which flows out of the lush jungle and falls directly into the ocean. Enjoy the chance to swim under this truly memorable waterfall, feeling the chilled fresh water meeting the warm ocean water and explore the surrounding crystal clear lagoons by snorkelling or kayaking. Delve deeper into this pristine landscape by Xplorer cruise in search of hidden lagoons or on a Rainforest Walk and spot exotic birds such as hornbills and birds of paradise along the way.

MISOOL, RAJA AMPAT

Today, we arrive at Misool, one of the four largest islands of Raja Ampat. Here we visit Balbulul Lagoon, an almost landlocked inlet populated with conical-shaped islets undercut at sea level that rise from turquoise waters like Christmas Trees. There is time to swim and kayak amongst the islands in this beautiful lagoon, as well as exploring the island by Xplorer and beachcombing. Embarking on a hike here will lead to a higher viewpoint to experience the amazing rock island formations. We will also enjoy a traditional Sasi Laut ceremony, a traditional custom of Raja Ampat communities to preserve the ecosystem and effectively protect marine species by limiting fishing during a designated period.

WAYAG, RAJA AMPAT

More Raja Ampat treasures await today as we explore the scattered karst 'beehives' of the Wayag Islands. This natural treasure is nature at its most vibrant both above and below the water, with emerald karst islands rising from the brilliant turquoise water. Explore the magnificent waterways and lagoons by Xplorer and Zodiac with time to swim in crystal clear waters and walk on white-sand beaches amongst the many islands. The coral reefs here provide exceptional diving and snorkelling, with many vibrant corals and tropical fish species to discover. After lunch, there is an opportunity for an energetic hike up to famed Pindito Peak, where you'll be rewarded with panoramic views over the island and its spectacular lagoon.

SORONG, RAJA AMPAT

Sorong is our departure point from the Indonesia region. Lush mountains covered with forest surround the town and fishing is a major part of the local economy. Here, we will go ashore to visit the Sorong Nature Conservation Park to see the big old trees planted by the Dutch many years ago. We will also be welcomed by the Moi Tribe, the owners of the land, who are culturally unique from other peoples in the surrounding regions. Enjoy demonstrations such as the making of the traditional Papuan handwork bag and a tour of a dragonfruit plantation. Later, enjoy a relaxing guided walk through the forest to look for birds.

TOBI (HELEN REEF), PALAU

Enjoy a true expedition stop at the small island of Tobi, home to around 30 people who live a traditional lifestyle. Meet the local people, who speak their own language of Tobian as well as some English, and enjoy snorkelling, swimming and beachcombing from the beach at Helen Reef. The island is known as a nesting site for lesser-crested terns and green sea turtles.

SONSOROL, PALAU

Isolated Sonsorol Island is one of the 16 States of Palau and is home to a population of between 25 and 65 people who are culturally and linguistically related to the Yap and Caroline Islands. Learn about their subsistence lifestyle disconnected from the modern world as we visit the village and dive and snorkel the fringing reef and coral gardens.

KOROR, PALAU

Koror is the main state of the Republic of Palau, as well as the main island. Koror City is home to about half of the country's population. The land mass of Koror is not large, with hundreds of islands and islets of volcanic and limestone reef construction that present a stunning vista of craggy forested islands surrounded by emerald seas.

Snorkelling and diving at Neco or Carp Island will reveal the underwater wonders to be discovered here. Later, go ashore in Koror, where there may be options to visit the Belau National Museum or Etpison Museum, which celebrates and educates about Palauan culture.

YAP, YAP STATE

Learn about Micronesian Yap Island's ancient monetary system of stone money, where limestone discs were quarried and carved into 'coins' known as Rai, which can be as large as 4m or as small as 4cm in diameter. There is an opportunity to visit the Yap Living History Museum to learn about Micronesian people and their time-honoured customs and culture, as well as snorkel and dive the lagoon with its coral reefs and abundant marine life.

ULITHI, YAP STATE

Snorkel and dive from some of Koror's palm-fringed beaches on a truly deserted islet in a remote part of the world. Enjoy the tropical vista of white sand beaches, colourful coral reefs home to sea turtles, coconut crabs and sea birds. There is also opportunity to visit the Ulithi Turtle Project and the vibrant community village.

DAY 17: ARRIVE GUAM

Our voyage ends in the US island territory of Guam with its significant WWII sites, cultural traditions of Indigenous Chamorro people that blend with the island's Spanish colonial heritage. Disembark Coral Adventurer at 8:00 am and bid farewell to new-found friends, the Master and crew

THROUGH THE ISLANDS & ATOLLS OF MICRONESIA

MANILA TO KAVIENG

25 NIGHTS | DEPARTS 9 NOVEMBER 2023



①

Expedition Highlights

- > Visit all four states of the Federated States of Micronesia including Yap, Chuuk, Pohnpei and Kosrae
- > Explore North Sibuyan Island known for its Jurassic-like sceneries and remarkable biodiversity with virgin forests, waterfalls and caves
- > Discover the seldom visited and remote Sohoton Cove with its limestone karst island hills and lakes of harmless golden jelly fish
- > Learn about the unique stone currency and construction techniques of the Yapese people
- > Explore famed archaeological site Nan Madol at Pohnpei, known as the 'Venice of the Pacific'
- > Meet the locals that call small remote atolls home and learn of their culture and way of life
- > Visit the historic location at Limasawa Island where the first crucifix was raised, hence converting the Philippines into a Catholic country
- > Snorkel and dive at almost every stop - from world famous lagoons to remote biosphere reserves

See Page 14 for Departures & Fares

②



③



④



[VIEW AVAILABILITY & BOOK ONLINE >](#)



ITINERARY: 25 NIGHTS > MANILA TO KAVIENG

DAY 1: DEPART MANILA

Board the *Coral Adventurer* in Manila at 5:00 pm for a 7:00 pm departure. Join the Captain's welcome drinks and meet your crew and fellow guests as the sun sets.

DAYS 2-25:

These are expedition itineraries covering remote regions. Your Captain and Expedition Team may make changes to the daily schedule when necessary to maximise guest experience. Below are the highlight destinations of your voyage.

APO REEF

Apo Reef, considered to be the second-largest atoll reef in the Philippines, is made up of two isolated coral reefs connected by a deep channel. This channel is one of the best dive sites in the world, with aquarium-like waters teeming with 285 species of fish. On our visit here, enjoy water activities, beachcombing and possibly a hike exploring the island.

NORTH SIBUYAN & CRESTA DE GALLO

Today we will go ashore to explore the Jurassic-like environment of the island, and visit the Cataja and Lambingan waterfalls, deep in the lush forest. In the afternoon, arrive at beautiful Cresta de Gallo for a late afternoon snorkel in the beautiful warm water before relaxing on the beach as the sun sets for champagne and canapes.

KALANGGAMAN ISLAND

Famous for clear blue waters, soft white sands and long stretching sandbars along both sides of the island, enjoy the relaxing surrounds of uninhabited Kalanggaman Island that stretches only 753m across. This is the perfect location to snorkel, dive and kayak on the calm waters. Venture onto the island where only a small number of huts are available for accommodation and there is a cap of 500 visitors per day to preserve the isolated unspoiled beauty of the remote location. Relax on the sand and savour a remote island experience.

LIMASAWA ISLAND, LEYTE

Limasawa harbours a significant religious history and abounds with fascinating marine life. Here we will climb up the 450 steps to see Magellan's cross and admire the panoramic view from atop the hill.

BUCAS GRANDE (SOHOTON COVE) & DAKO ISLAND

Here we will visit Sohoton Cove, a diverse natural landscape with valleys, hilltops, soft-sandy beaches, lush forests and mountains. This location is best explored by pump boat, which will allow you to discover limestone pool caves within the cove and the forest that envelops it. Float through famed Blue Lagoon which is an intricate channel of limestone atolls. Swim with harmless jellyfish in Jelly Fish Lake and snorkel or dive at a quintessential tropical island beach destination at Dako Island.

KOROR, PALAU

Koror is the main state and island of the Republic of Palau. Hike to Jellyfish lake for an unforgettable swim with harmless golden jellyfish, which migrate horizontally across the lake each day. Snorkelling and diving at Neco or Carp Island will reveal the underwater wonders to be discovered here and a visit to the Belau National Museum or Etpison Museum with uncover fascinating historical insights.

YAP, YAP STATE

Yap state is one of the four states of the Federated States of Micronesia. The main island of Yap is famous for its stone currency - limestone discs (Rai) spanning in size from 4m to 4cm in diameter and can be seen embedded in the earth or standing in rows near villages. Be welcomed with traditional dancing, visit one of the villages to learn about their stone currency and stroll through Colonia's Yap Living Museum.

IFALIK ATOLL, YAP STATE

One of the most traditional villages in Micronesia, Ifalik is determined to maintain a cultural integrity that we are privileged to experience. Witness traditional dances and demonstrations of skills integral to the local lifestyle such as rope making, pandanus fibre making, basket weaving and carving. Enjoy another spectacular dive or snorkel as well as bird watching.

LAMOTREK ATOLL, YAP STATE

Subject to permission of the locals, visit the villages of Lamotrek Atoll where the residents are known for their navigation skills and construction of elegant long canoes constructed from breadfruit wood. Here, we may see demonstrations of weaving and the creation of traditional foods, as well as exploring the beaches and snorkelling over the fringing reef.

PULOWAT ISLAND, CHUUK STATE

At Puluwat Atoll, we may visit an abandoned lighthouse or see WWII wreckage at Alei Island. Continuing to Chuuk, the main atoll of Chuuk State, we explore the spectacular coral-fringed lagoon, which shelters the mountainous volcanic islands. The sweeping views of lush rainforest and cascading waterfalls contrast with deserted beaches, small, thatched villages and tiny islets swarming with bird life.

TRUK, CHUUK STATE

This spectacular and vast coral fringed lagoon shelters 15 high reaching volcanic islands. The dramatic scenery ranges from lush rainforests and waterfalls to deserted beaches and small villages laced in World War II history. Divers can explore the eerie underwater 'ghost fleet' and birders can search the islets for plentiful seabirds. Enjoy a nature walk and visit historical sites.

ANT ATOLL, POHNPEI STATE

We may have the opportunity to go ashore at Ant Atoll, a stunning coral reef atoll that is recognised as a World Biosphere Reserve. Home to some of the largest colonies of terns, boobies, black noddies and frigatebirds in the Pacific, the lagoon also has a thriving population of grey reef sharks.

KOLONIA, POHNPEI STATE (NAN MADOL)

Visit the archaeological site of Nan Madol, a stone city with many ocean-filled canals and channels. Known as the 'Venice of the Pacific', the ancient city was a royal civilisation in the 12th century. Tour the site and have the opportunity to explore with nature walks to view native flora and fauna as well as waterfalls.

KOSRAE ISLAND, FEDERATED STATES OF MICRONESIA

The mountainous island of Kosrae is known as the 'island of the sleeping lady' and is the easternmost state in the Federated States of Micronesia. Explore the enigmatic Lelu Ruins site, once an impressive city covering 20 hectares with an extensive canal system, social structure and pyramidal tombs. In the afternoon, enjoy snorkelling and diving, explore the island by bushwalking and hiking, visit the Giant Clam Farm or spend time conversing with the local people including a traditional performance.

KAPINGAMARANGI, POHNPEI STATE

Kapingamarangi is the most southerly point of Micronesia and a Polynesian outlier, located some 740km from the main island, the state of Pohnpei. Here we will visit the charming village where islanders are well-known for their wooden carvings. There is an opportunity to purchase handmade souvenirs and snorkel in the pristine azure waters on our visit.

AT SEA

Relax on deck with onboard presentations from our Guest Lecturers, workshops, and demonstrations. This voyage includes eight full sea days and five half sea days.

DAY 26: ARRIVE KAVIENG

Arrive in Kavieng at 8:00am to disembark *Coral Adventurer* at 9:00am. Those who are booked on the charter flight will also enjoy a post-cruise tour of Kavieng upon disembarkation.

The Expedition Experience

We explore remote locations that are hard to reach or not often touched by tourists, with shore excursions providing environmental and cultural appreciation. Our small group sizes ensure your experience is personal, with minimal impact on the communities and environments we visit.

Enjoy excursions or activities each day, guided by expert Expedition Leaders and Lecturers who provide commentary on culture, history, and the region's unique geology, plants and wildlife to help you connect with these special places.

Australian Hospitality at Sea

On board our Australian-flagged expedition ships, discover a personalised, relaxed style of cruising. With a maximum of 120 guests, there is no need for queues or assigned seating. Instead, an intimate, convivial atmosphere shared with like-minded travellers makes you feel at home.

Our Australian and New Zealand crew share their passion for our destinations and the explorer's life. Join our engine room tours, watch our chefs at work in the open galley, and chat with our Captain or officers on the bridge - they will be delighted to have your company.

Our chefs, inspired by destination flavours, prepare cuisine from fresh regional produce. Our wine cellars hold a curated selection of wines and unique beers from Australia and New Zealand.

Our guests love to mingle over drinks as the sun sets, enjoy daily educational presentations by our lecturers, participate in stargazing sessions after dark, or simply find a quiet corner on deck and enjoy the solitude.

SailSAFE

Our Health & Safety Plan for guests & crew

Our SailSAFE Plan

It is always our priority to keep our guests and crew safe while travelling with us. In the environment of COVID-19 we want our guests and crew to have confidence that their safety and wellbeing have been thoroughly considered.

We have put in place a range of tested and proven protocols to manage our expeditions in a world in which COVID-19 exists.

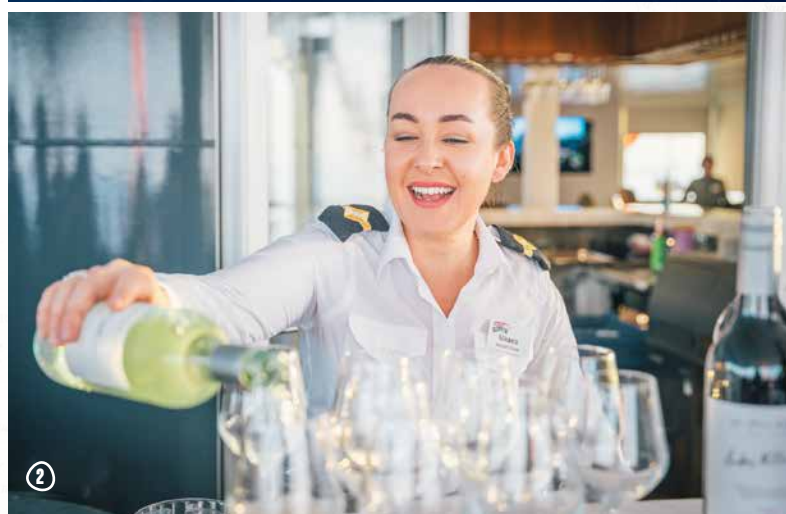
Our key focus is on preventative measures where our protocol includes mandatory vaccination and COVID-19 testing for all guests and crew prior to boarding. Once onboard we have adopted a wide range of mitigation actions and a response plan that is approved by authorities in the regions in which we operate. Our plan is supported by Standard Operating Procedures, developed for each vessel requirements specific to the cruise destination.

We have maintained a high standard of safety and guest comfort for four decades - a record we are proud of.

As one of the first cruise lines to return to operations globally in October 2020, we have been safely operating voyages under SailSAFE and accumulated significant expertise in operating in this environment. We trust this SailSAFE Plan offers you peace of mind as you plan your explorations of Australia's coastline, and the world, with Coral Expeditions.

Thank you for your support and we look forward to welcoming you onboard.

[READ THE COMPLETE PLAN >](#)



Inclusions

- > Daily excursions and sightseeing
- > Snorkelling & equipment (Scuba diving at additional cost)
- > Use of Xplorer, Zodiacs and kayaks
- > Daily lectures and briefings
- > All meals, chef-prepared on board
- > Selected wines, beers, and spirits, juices, and soft drinks served with lunch and dinner service
- > Coffee and selection of teas
- > All entrance fees to National Parks and Ports
- > Tips and gratuities

CORAL ADVENTURER

Passengers: 120 | Staterooms: 60
Length: 93.4m | Draught: 4.5m | Tonnage: 5,516

Our expedition vessel, *Coral Adventurer*, will be your home for this voyage. *Coral Adventurer* accommodates 120 guests in 60 spacious staterooms, with all Explorer Deck staterooms, Bridge Deck staterooms and suites offering private balconies.

With over 1000sqm of open deck space including a wrap-around promenade deck with panoramic views, *Coral Adventurer* features spacious and vibrant living spaces inspired by the company's Australian ethos and the wide-open spaces the ship visits. Multiple indoor and outdoor bars, including the Xplorer bar on the sundeck, a well-equipped gym and a passenger elevator creates an environment designed for guest comfort.

Coral Adventurer is purpose-built for comfortable ocean voyages and for exploring remote areas inaccessible to larger cruise ships. The ship's lightweight dual Xplorer expedition tenders extend the capabilities of the ship by allowing deeper exploration, on shore excursions and an easy, step-on embarkation from the ship's main deck. *Coral Adventurer* also features advanced technologies and environmentally-responsible design, including anchor-free technology and efficient water and waste recycling systems.

As an Australian flagged and crewed vessel, you can expect the highest standard of service, environmental responsibility and the intimate and personal experience of small-ship cruising on *Coral Adventurer*.

Features

- 2 Xplorer tenders, 6 Zodiacs • Navigator Lounge in Bridge • Single seat dining • Three cocktail bars • Well-equipped gym • elevator • Anchor-free technology

Stateroom Categories

Bridge Deck Balcony Suites	• 55.8sqm • Private Balcony
Bridge Deck Balcony Staterooms	• 21.4sqm • Private Balcony
Explorer Deck Balcony Staterooms	• 21.4sqm • Private Balcony
Promenade Deck Staterooms	• 17sqm • Picture Window
Coral Deck Staterooms	• 17sqm • Porthole Window

[VIEW DECK PLAN >](#)

IMAGES 1 Explorer and kayak | 2 Australian hospitality | 3 Boarding an Explorer | 4 *Coral Adventurer* | 5 Explorer Deck Stateroom | 6 Bridge Deck Suite Bathroom | 7 Bridge Deck lounge | 8 Sunset drinks | 9 Onboard cuisine | 10 Bridge tour





IMAGES 1 Yoron-Fork Village | 2 Tokujima-Iya Valley | 3 Bird Sanctuary Miyakejima-Akakokko | 4 Sasebo-Mukyudo (Former Air-Raid Shelter)

SMALL SHIPS
FEWER THAN
120 GUESTS

VACCINATED
PASSENGERS &
CREW

REMOTE
NATURE-BASED
EXPEDITIONS

WARM
AUSTRALIAN
HOSPITALITY

APPROVED
SAILSAFE
PLAN



SailSAFE

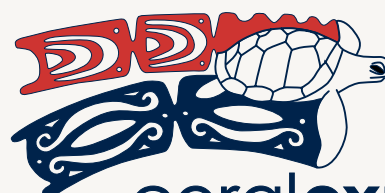
Our Health & Safety Plan for guests & crew

REQUEST AN EMAILED BROCHURE >

Contact us today or speak with your travel agent.

Online www.coralexpeditions.com
Email explore@coralexpeditions.com
Free call (Australia) 1800 079 545
Outside Australia +61 7 4040 9999

Head office PO Box 2093 Cairns 4870 QLD Australia
ABN 51 010 809 417



coralexpeditions
AUSTRALIA'S PIONEERING CRUISE LINE

Last Updated: February 24, 2023 12:28 PM